

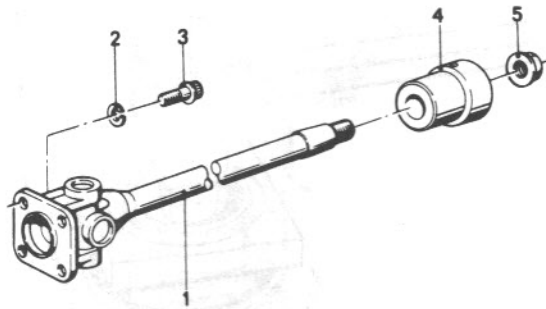
The BMW Motorcycle — Drive Shaft

Documentation for the BMW Service Training School

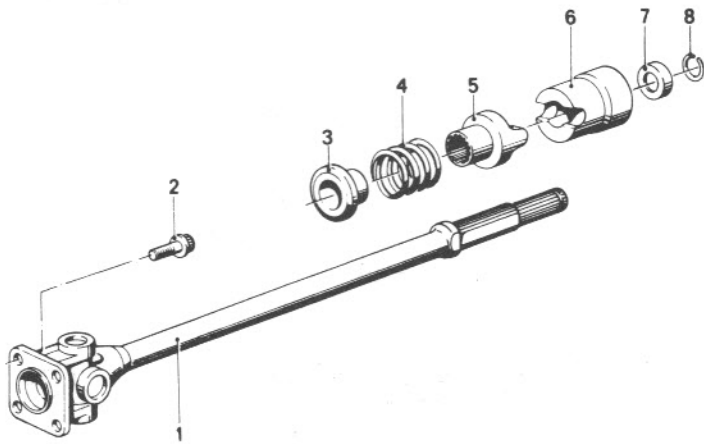
BMW Motorrad GmbH + Co. Munich
Service Promotion



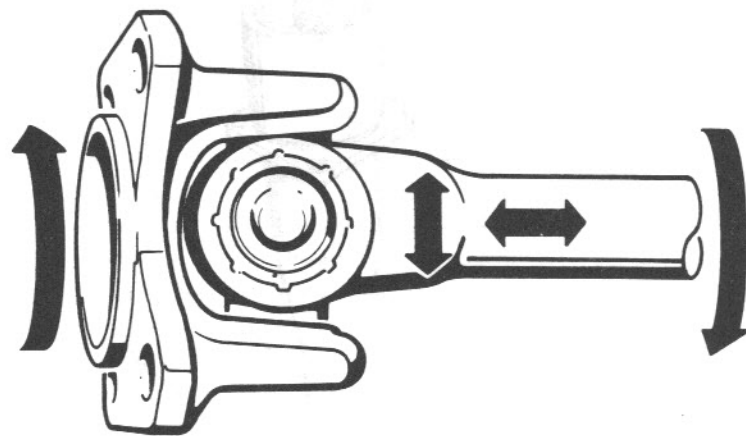
The BMW motorcycle — drive shaft (to rear wheel)



For 246/247 models, without drive take-up damper



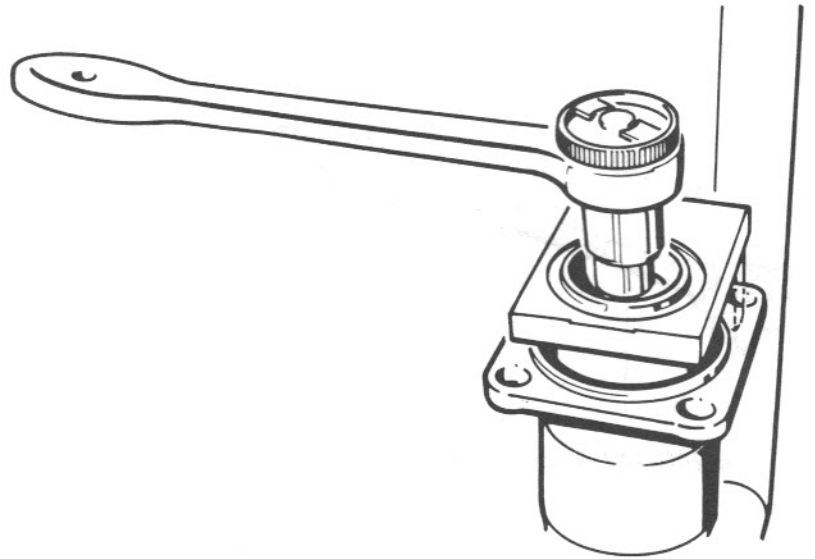
For 248/247 (79) models, with drive take-up damper



Testing the universal joint

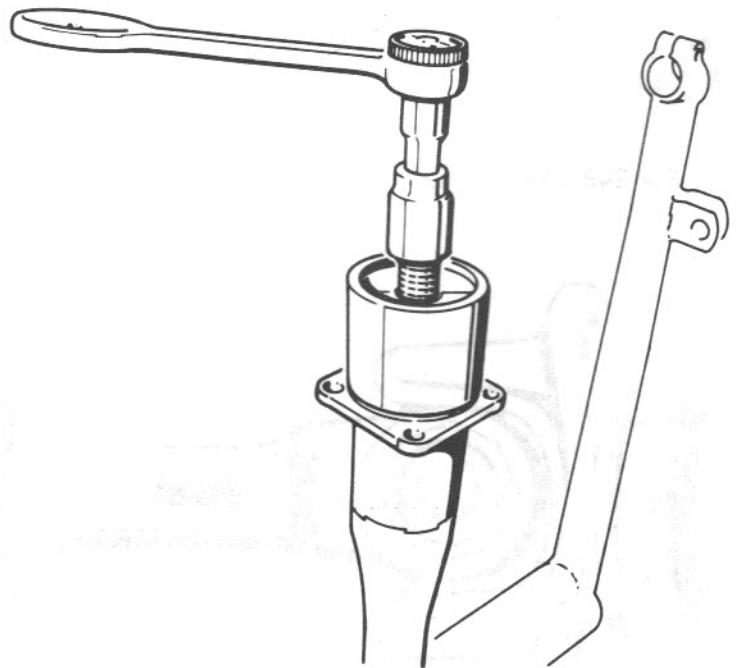
Removing and installing drive shaft

Version without drive take-up damper



Unscrew nut with special tool 26 1 600

Press off coupling bell housing with special puller 26 1 650



When installing:

Clean the taper faces (they must be free from grease) and tighten to 200 – 220 Nm, using a new nut.

Special tools — drive shaft

Order No.	Designation
26 1 600	Counter-holder For slackening and tightening the drive shaft coupling bell housing
26 1 650	Special puller For removing bell housing from drive shaft. This puller enables the bell housing to be removed without first having to remove the swinging arm.
26 1 654/655	Additional shells for special puller For removing drive shaft coupling bell housing on R 60/7 — R 100 RS ('78 model)
26 1 700	Assembly fixture For removing and installing the torsional damper on the drive shaft, on R 80/7 — R 100 RS from '79 model on and R 45, R 65